



# Sustainability Update 2.0

2022



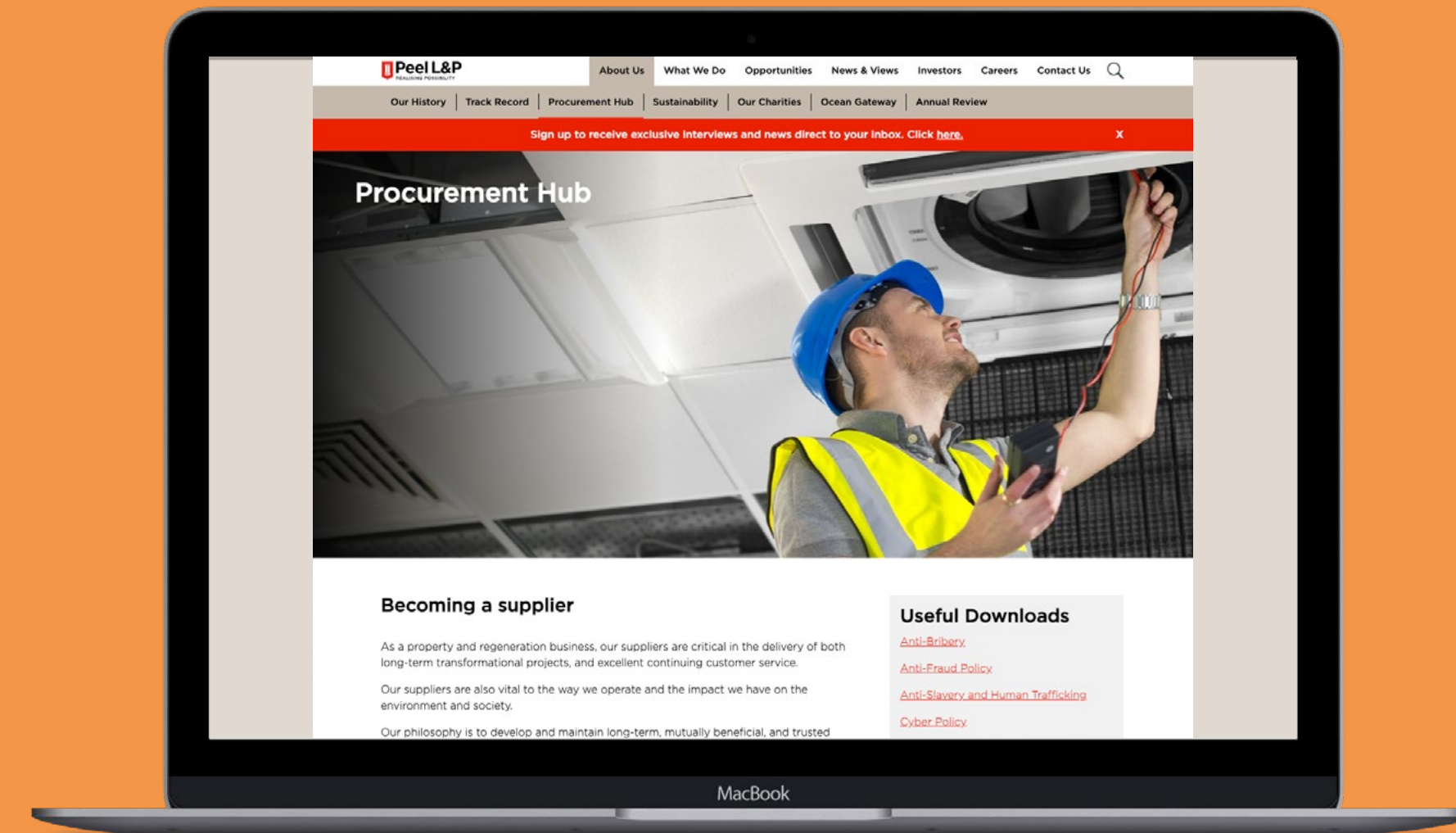
# Policies, procurement and the Pea Pod

Every year we review our sustainability policies to make sure they are still relevant, not only to our business, but also in line with changing legislation and trends. This year we have added a sixth policy, on 'Net Gain', which is all about our commitments to putting more back into our projects for the benefit of communities and wildlife. The new Net Gain policy sits within our suite of sustainability policies on the sustainability extranet page, and our sustainability webpage. Not only can you read the policies, this year you can also listen to the dulcet tones of your colleagues who will guide you through the main changes in the 2022 policies!

The sustainability policies can also be found on our [Procurement Hub](#) page on the Peel L&P website. This new page has been created for the benefit of companies wishing to become suppliers to Peel L&P and provides a wide range of documentation to download, including our Supply Chain Code of Conduct. We will add more information to the Procurement Hub over time, to outline our expectations of responsible suppliers.

We need to ensure we are keeping to the commitments outlined in our policies, and for this reason we are starting to audit business units against our policy statements. Similarly, we need to check on our suppliers' sustainability performance, and so we are developing an assessment for them, to be sure they are working towards and meeting our requirements.

In this issue, we share the results of our annual ESG Metrics exercise and provide a snapshot of how we reduced carbon, enhanced biodiversity and uplifted social value for communities in the last financial year. We also share some results on the success of the Pea Pod at Venus, our very own allotment cared for by the

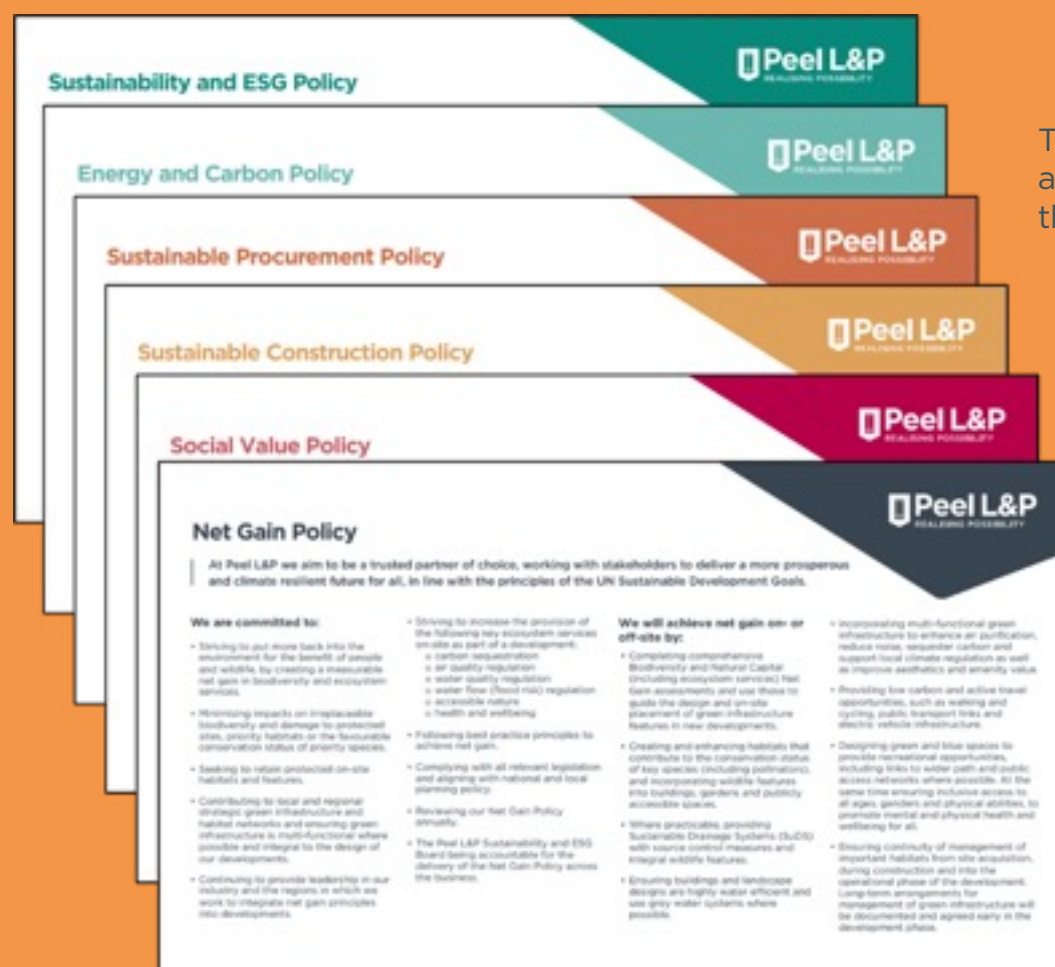


The Procurement Hub is where companies wishing to become suppliers to Peel L&P can find further information, including all of our Sustainability and ESG policies.

children at Kids Allowed – a fine example of reducing carbon (zero food miles), enhancing biodiversity (plants for pollinators) and uplifting social value (food to fork pre-school education), right on our own doorstep. A big thank you to Paul Chappels and the Facilities & Asset Management Team for making this happen.

Many thanks to everyone who contributed to the ESG Metrics exercise and I hope you enjoy this issue.

**Jo Holden**  
Sustainability & ESG Director



The 2022 Sustainability Policies are available on our [extranet](#) and the Peel L&P Procurement Hub

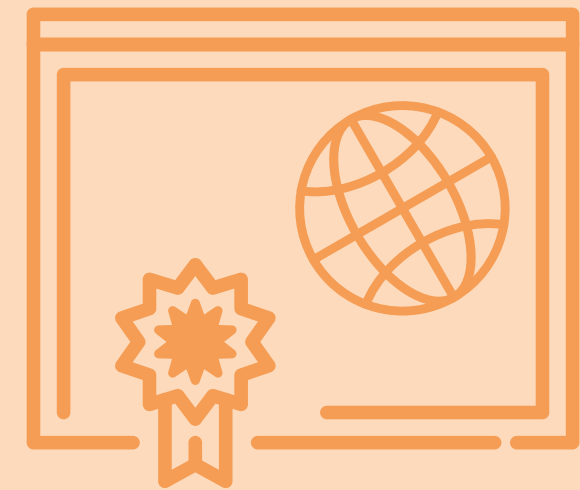
# ESG Metrics 2021/2022

Each year we ask teams across the business to provide information on their environmental and social activities, so that we can capture the value our projects create for local communities.

Thank you to everyone who submitted information this year – it really helps us to communicate the good work we are doing to a wide range of stakeholders, including you!

# Our people

**Over 2,000 hours of training undertaken by our people**



**18% of our workforce hold a carbon literacy certificate**



**Over 5,600 hours of volunteer work by Peel L&P and partners on community projects**

**52 new jobs created at Peel L&P**



# Our construction activities



**769 homes created by facilitation**

**8 acres of public realm created**



**4.5km of new bike pathway created**

# Investment in the North West

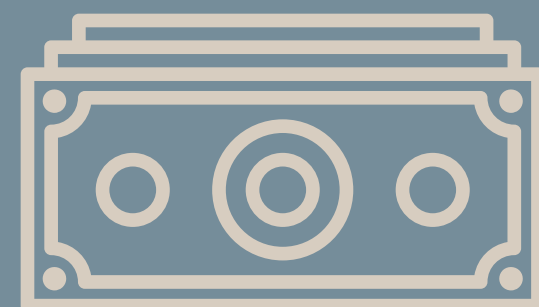
Over £132 million was spent with Greater Manchester businesses



Over £400,000 spent on research and development opportunities

# Giving Something Back

Over £500,000 in cash donations



Over £200,000 of in-kind donations

# Natural Environment



37 acres of designated conservation sites on Peel L&P land

1,467 acres of land with a Biodiversity Net Gain assessment



307 trees planted

# Energy and Carbon

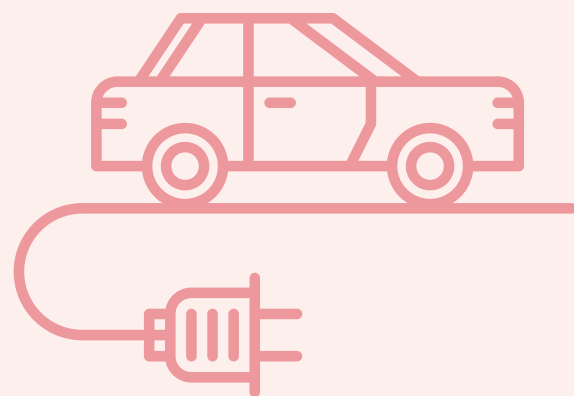


Re-certified to ISO 50001 for our eighth consecutive year

22% energy reduction (across the ISO 50001 portfolio from a 2014 baseline)

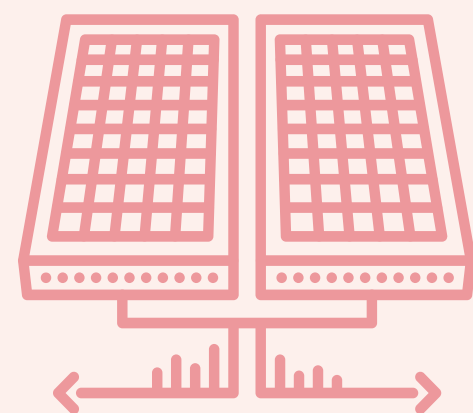


2,703 tonnes of CO<sub>2</sub> saved during 2021-22

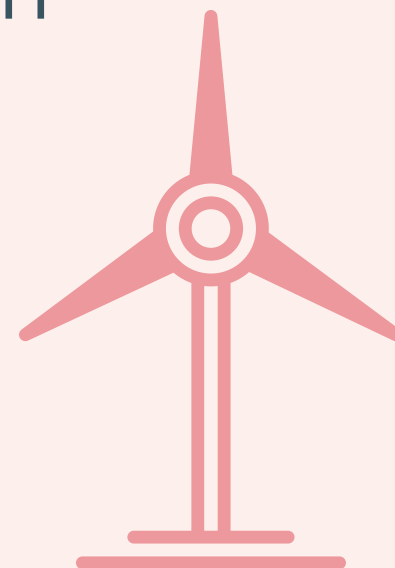


10 new EV charging points installed, bringing the total across our sites to 72

1 new development with on-site solar power



Over 5,700 MWh of wind energy generated



# Waste & water

Zero waste to landfill for the fourth year in a row



750 tonnes of waste directly recycled



34% reduction in water consumption (compared to baseline year)

# Public engagement

Engaged with 577 people in charitable, cultural, and health & wellbeing activities



Engaged with over 7,000 people in public consultations

# “Enjoyable and very informative”

## Carbon Literacy Training

In March the Bridgewater Canal team took time out to boost their ‘Carbon Literacy’.

**A training course specifically tailored for the team was developed and hosted by environmental charity Groundwork at the Trafford Ecology Park, and the feedback was great!**

Carbon Literacy Training is for anyone who would like an introduction to climate change and to better understand how they can reduce their carbon footprint.

**The course covers:**

1. The significance of climate change and its role within our everyday lives.
2. The impact of our activities on carbon emissions.
3. How to make informed choices that help you to do your bit for the planet.

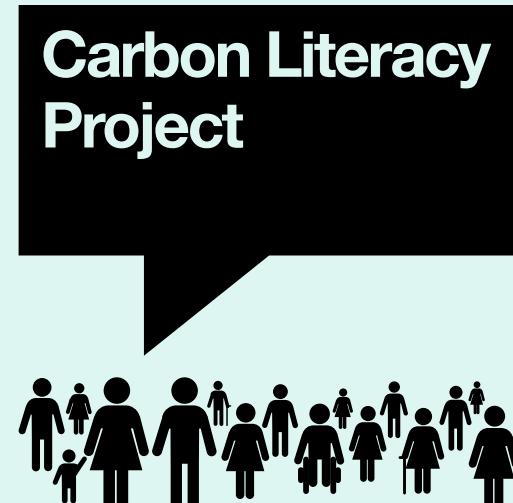
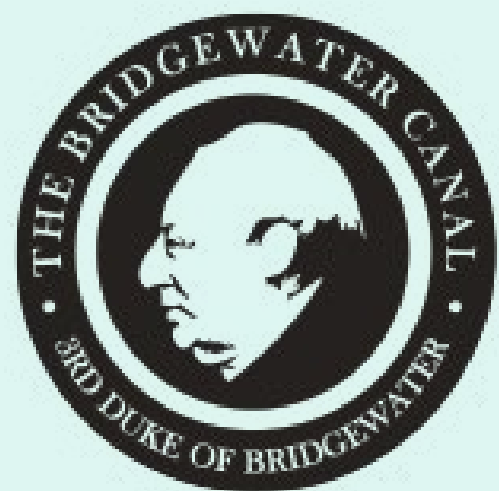
If you are interested in taking part in Carbon Literacy Training, please get in contact with Victoria Sweeney.

**Eric Livesey**  
Bridgewater Canal  
Maintenance Supervisor

Myself and the Bridgewater maintenance team found the Carbon Literacy course interesting and enjoyed the interaction. **The course demonstrated how we as a team, can work together to make small changes to our working practices that will go a long way in helping to improve the environment.**

**Chris Wareing**  
Bridgewater Canal  
Engineering Manager

The Carbon Literacy course was enjoyable and very informative. **The course content gave a real insight into how we can all make changes, improve our habits, to make a difference and help educate others.**



# Venus' Pea Pod Success



In the first Sustainability Update of 2022 we discussed the plans for an allotment at Venus - the 'Pea Pod' - a place where staff would be encouraged to plant and grow fruit & veg.

In April a few of our team members made the most of the sunshine at our Venus workspace and welcomed some mini volunteers from neighbouring Kids Allowed to plant some fruit and veg seeds as well as some wildflowers at our Pea Pod.

The plan is for the kids who helped plant the fruit & veg to then harvest the carrots for snacks at nursery.

We also plan to donate the produce we grow to the Embassy Homeless Scheme, along with donations of the one-person cookbook, which our supplier partner EQUANS has commissioned.

Look out for the strawberries, carrots, potatoes, onions and much more flourish over the coming months!



**“Our children at the nursery, TraffordCity have enjoyed the visits to the ‘Pea Pod’ engaging with their friends, whilst enjoying planting and watering the plants. The team that has supported us have been so welcoming and the sessions have been so organised. The children talk about it most days and we cannot wait to visit again.”**

**- Lisa Brindley, Nursery Centre Manager, TraffordCity**



SDG 15 'Life on Land' is all about helping communities to connect with nature



# Peel L&P celebrates National Walking Month 2022

As part of National Walking Month in May, colleagues from across Peel L&P took part in a steps challenge!

Hosted by our Wellbeing Champions, the challenge ran from the 1st to the 31st of May and involved teams of staff submitting weekly step counts.

**Congratulations to the Quayside Kickers for winning 'Walk this May' with a total step count of 1,642,081!**

Wellbeing  
at Peel L&P

**“In May we had 55 colleagues take part in the #WalkthisMay steps challenge. The steps challenge is a great initiative to get people enjoying the benefits of walking. Walking is an easy and accessible way to improve physical and mental health and a 20-minute walk can reduce the risk of a number of preventable health conditions, including certain cancers, depression, heart disease and Type 2 diabetes.”**

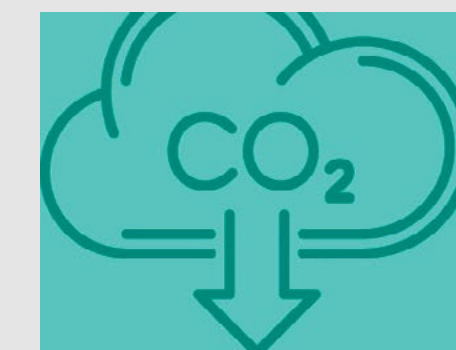
**Emma Connolly, Culture & Wellbeing Lead**



## Did you know?



- Walking has a whole host of health & environmental benefits that will motivate you to introduce walking into your daily lives!
- A 30 minute walk a day is said to: increase cardiovascular fitness, reduce the risk of heart disease and stroke as well as reducing body fat and strengthening your bones and muscles.
- Walking also has amazing effects on your mental wellbeing, it can improve your self-esteem, overall mood and greatly enhance your sleep quality.
- Getting outdoors for a walk also gives you the opportunity to connect with nature. The national charity Mind outlines how exercising outdoors can improve your mood, reduce feelings of stress or anger & tackle loneliness – see more on How nature benefits mental health - [Mind](#)



By swapping a short drive for a short walk, you can also help reduce air pollution, congestion and road danger - whilst saving yourself some money and getting active in the process!

# Peel L&P team takes action to mark UN World Environment Day

Employees from across Peel L&P have taken part in a special volunteering day to mark World Environment Day, the United Nations Day for encouraging worldwide awareness and action to protect our environment (5 June).

The team from Peel L&P's net zero carbon workspaces at Venus, in TraffordCity, and the new hub, Evolve, at MediaCity, spent the day at Trafford Ecology Park, with environmental charity, Groundwork Greater Manchester, on a range of projects to manage the woodland, protect local wildlife and preserve the area's valuable biodiversity.

People from a wide range of functions, including finance, people and culture, and planning, took part in the volunteering day, which was organised by the sustainability team to promote the importance of World Environment

Day and encourage everyone to take action to support the local environment. Making use of their corporate volunteering day, individuals worked together as a team on clearing and preparing an area for wildflower planting and building bat and bird boxes.

Corporate volunteering days like this are so important as they encourage more people to take climate action, protecting our local green spaces, encouraging wildlife, and preserving biodiversity.

Watch this [video](#) to find out more about Groundwork's Corporate Volunteering days.



**“Our volunteering day at Trafford Ecology Park was a huge success, all the team got stuck in and we were able to make real improvements to a local area popular with so many. It was a great way to celebrate World Environment Day 2022 and take some real climate & biodiversity action locally in Trafford Park.**  
- Victoria Sweeney,  
Sustainability & ESG Advisor



# Winner Zach wows judges with sustainable design

NORTHSTONE



St Peter's Catholic High School's 'Curriculum for Life', is designed to help pupils develop the knowledge, understanding and skills they need to manage their lives, now and in the future. Northstone were invited to set the students a challenge that would help them to learn about different career options available. The competition Northstone hosted challenged the students to design a bedroom for one of Northstone's new homes at its upcoming Tulach development in Wigan.

The students were asked to consider design, colours, layout, materials, and functionality. The designs also required students to have a key focus on sustainability and energy efficiency - which is at the centre of the developments Northstone deliver.

The competition took place in summer 2021 and the 15 winning students are now taking part in a five-year project with Northstone based at the Tulach site in Wigan. Throughout this five-year period the St Peter's winning students will take part in site visits and activities through the delivery of this new community.

**Jo Allen, Head of Partnerships and Development at Northstone, said:**

**"At Northstone, we are committed to working with our communities to create opportunities for local people, no matter their age. It was a joy to work with St Peter's, and the students didn't make judging easy. The creativity and consideration that went into each and every entry was clear, and we are so looking forward to welcoming the 15 winners to Tulach so they can get a sense of what goes into building our homes."**

**Catherine Welch, Head of Curriculum for Life at St Peter's Catholic High School, said:**

**"St Peter's Curriculum for Life is designed to help learners develop the knowledge, understanding and skills they need to manage their lives, now and in the future. We place a lot of emphasis on providing pupils with opportunities to experience a range of career focussed activities. We are so pleased that our link with Northstone has allowed this to happen even before pupils begun their Year 7 journey and will continue throughout their time with us."**



# Peel L&P and Wirral Met College - a partnership like no other

The Peel L&P partnership with Wirral Met College started with the completion of the Wirral Met College Construction campus in 2015 - the first building to have been delivered by Peel L&P in Wirral Waters and designed to create the 'workforce for the future'. The building itself was rated BREEAM 'Excellent', won two RIBA awards, and students from the college were involved in its construction.

As part of the partnership, the Wirral Waters team ensure all main contractors working across the project are fully engaged with the college. During this latest phase of delivery, we have worked with the college and our main contractors to maximise opportunities for learning, site visits, work experience, apprenticeships, and jobs for the students.

Recent engagement has included:

- Site visits with Soilfix, Peel L&P's contractors undertaking remediation works at the Northbank sites (one of the largest remediation projects of its kind on Wirral).

- Remote and on-site learning opportunities facilitated by Peel L&P and Cambrian Way, the main contractors on the Tower Road streetscape project.
- Site visits to the East Float site to learn about modular construction.

As the construction begins on other developments, including the £130m Millers Quay project, this partnership will grow to the benefit of local young people seeking training and job opportunities in construction and associated trades.

## Hythe

The newly completed Hythe Grade A workspace at Wirral Waters has met its BREEAM target rating of 'Excellent', placing the project in the top 10% of all buildings for its sustainability credentials.

Located within the Four Bridges neighbourhood, the Hythe building is neighbour to the Wirral Met College (WMC) Construction Campus.

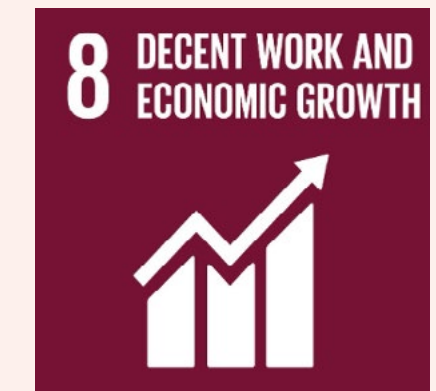


During the construction of Hythe, many students benefited from site visits organised by GMI, the main contractor, and other learning opportunities, gaining practical on-site work experience and full time roles in the construction industry. A total of 12 students gained ongoing work experience, four of which were offered full time roles.

**Hythe, Wirral Waters opens for business - [YouTube](#)**

**“The first building we built at Wirral Waters was the Wirral Met College construction faculty. Peel L&P’s partnership with the College is to create the construction workforce for the future using Wirral Waters as ‘the classroom’ for the students. The BREEAM Excellent Hythe office is the latest project where we have had College students benefitting from work experience and apprenticeship opportunities. We are looking forward to continuing the partnership with the College into all other projects at Wirral Waters”.**

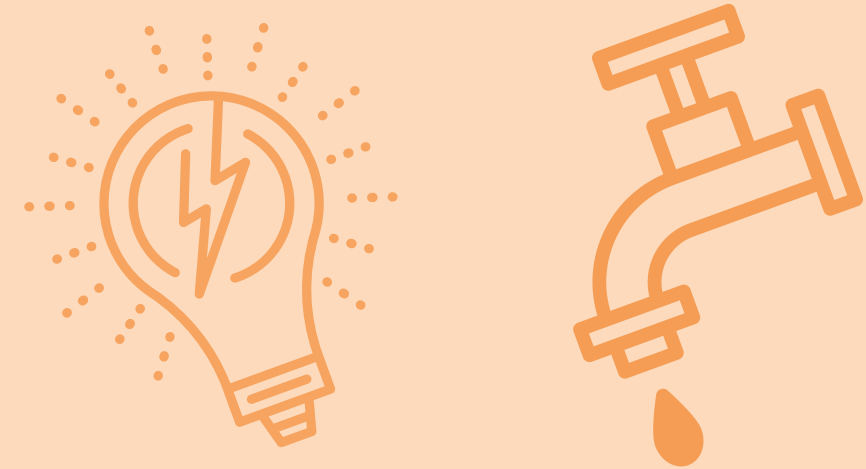
**- Richard Mawdsley, Director of Development - Wirral Waters**



SDG 8 is all about promoting sustained, inclusive, and sustainable economic growth, full and productive employment, and decent work for all.

# Tips for a more sustainable lifestyle

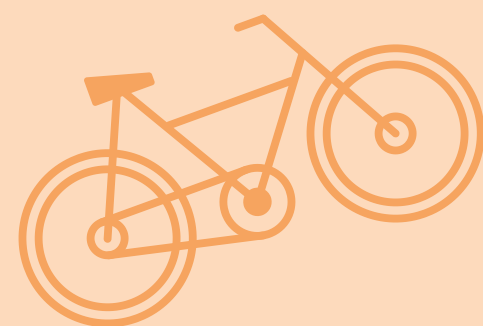
You asked,  
we listened.



Following on from the **Sustainability Survey 2022** you told us that you wanted to see more tips on how to be more sustainable at home and in the office.



By reducing your carbon footprint, you can help tackle issues of climate change, pollution & environmental degradation – **so here are some tips on how to take personal action towards living a more sustainable lifestyle (and save money on your household bills!).**



## 1. *Save energy*

- Switch off appliances such as your TV rather than leaving it on standby, turn your heating down by 1 degree, use the tumble drier less during the warmer summer months.

## 2. *Save water*

- Install a water butt to harness rainwater, don't let the tap run and have shorter showers.

## 3. *Drive less*

- Become an active traveller. This might include walking, running or cycling, but if active travel isn't an option, then try taking public transport. Active travel is better for the environment and your health & wellbeing.

## 4. *Eat less meat*

- Intensive agricultural activities can contribute to climate change and the pollution of land and waterbodies - try 'Meat free Monday' to help reduce the environmental impact of your diet.

## 5. *Reduce food waste*

- To help reduce your contribution to UK food waste try planning out meals to avoid over-buying at the supermarket, use gone off food to make compost if you have a garden, and use leftovers for lunch at work or tea the next day.

## 6. *Grow your own*

- By growing your own fruit & veg you can help to avoid the use of pesticides used in industrial farming practices, this reduces water and air pollution and eliminates the food miles associated with your food.

## 7. Recycle and reuse

- Always ensure you are putting your rubbish into the correct bins to avoid your waste ending up in landfill. Always re-use items that you may have previously thrown away i.e. glass jars for food storage, takeout containers for packed lunches, & old towels for cleaning rags.

## 8. Reusable alternatives

- Single-use plastics can end up in landfill and the ocean, causing environmental pollution and degradation. By using re-usable coffee cups, drinking bottles & metal straws in the office and at home you can reduce your single-use plastic waste.

## 9. Go paperless

- This is a big one for the office. To avoid paper waste, take a 'digital first' approach and view documents on your computer, rather than printing them.

## 10. Donate

- Avoid throwing out old clothes and instead donate them. This will give your clothes a longer life and help reduce waste.

## 11. Sustainable clothing

- The fashion industry is a major global polluter, so by purchasing second hand or ethically produced garments you can reduce the carbon footprint of your wardrobe.

## 12. Switch to eco-friendly home products

- Many cleaning products contain harmful chemicals but by switching to eco-friendly versions you can prevent these chemicals from entering the environment.

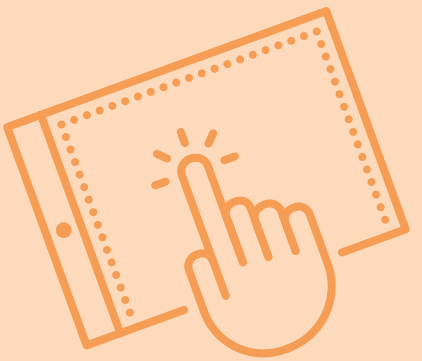
Try picking one or two to focus on each month and see where it takes you!

When switching to an 'eco-friendly' product always beware of 'Greenwashing'. Read about 'Greenwashing' and how to avoid it [here](#).



Access the WWF Footprint Calculator [here](#) and measure your impact on the planet.

**Thanks for reading**, and remember - we all have an impact on the planet in our day-to-day lives. By reducing the amount of the Earth's natural resources that you use you can begin to help protect it with the aim of having as little impact as you can. The human race is currently producing resources, using energy, and creating waste at an unsustainable rate!



# Recognise these familiar faces?

## What does sustainability mean to them?



**Michael Tsegay**  
Cleaning Operative

“Sustainability to me is all about the social side of things. To have a society that functions properly we must tackle inequality and create equal opportunities. In my personal life I also make the choice to recycle, I do this to help reduce pollution and because I believe it is all our responsibilities”.

**Anna Todorova**  
Cleaning Operative

“Sustainability to me is about making small changes in your life that have a big impact. I make the choice to walk to work instead of driving, I do this because I know how damaging the emissions from my car are on the environment. At work, I also use cleaning products from Anchor that contain less harmful chemicals for the environment and myself”.



**Ben Obe**  
Security

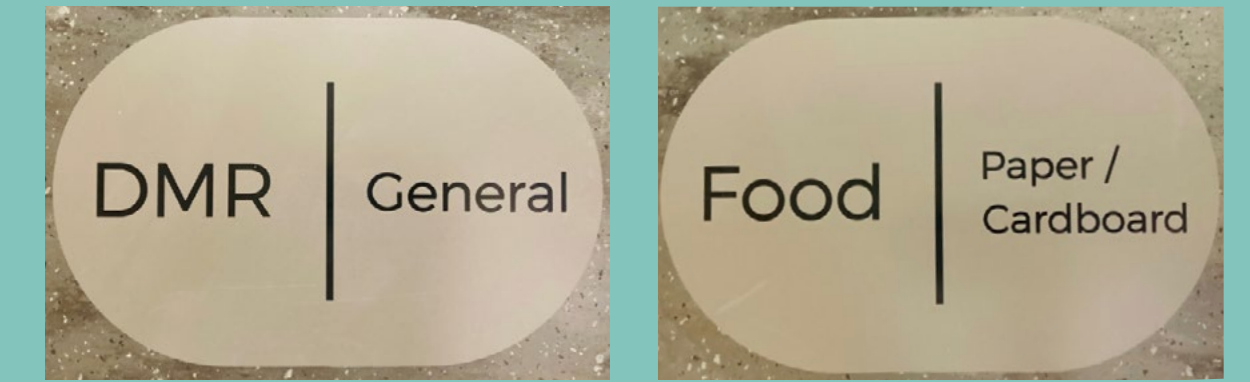
“Climate Change is happening, and we are damaging this beautiful world we live in. I play my part at work and home by recycling as much as I can from food to glass, cardboard to cans. I also think it is important to exercise because it can keep you physically and mentally resilient.”

# Recycling at the Peel L&P hubs

At both the Venus & Evolve workspaces we offer recycling bins for **General Waste**, **Dry Mixed Recycling (DMR)**, **Paper & Cardboard**, and **Food Waste** (coming soon to Venus)!

Bespoke recycling bins for each recycling stream have been installed in the kitchens to make it easier for people to recycle.

To help ensure we are all segregating our waste properly we need to familiarise ourselves with the do's and don'ts of each waste stream:



DMR stands for Dry Mixed Recycling and includes clean and dry food and drink containers

## General Waste

- ✓ Food Packaging
- ✓ Paper towels
- ✓ Cling film
- .....
- ✗ Liquids
- ✗ Food Waste
- ✗ Hazardous Waste



## Dry Mixed Recycling (DMR)

- ✓ Plastic
- ✓ Drinks cans
- ✓ Tins
- ✓ Milk cartons
- ✓ Coffee cups
- ✓ Foil
- .....
- ✗ Food Waste
- ✗ Glass
- ✗ Liquids



## Paper & Cardboard

- ✓ Dry Cardboard
- ✓ Clean Dry Paper
- ✓ Newspaper
- ✓ Magazines
- ✓ Envelopes
- .....
- ✗ Food Waste
- ✗ Shredded Paper
- ✗ Glass



## Food Waste

- ✓ Teabags
- ✓ Banana skins
- ✓ Peelings
- ✓ Leftovers
- ✓ Fruit & Veg
- ✓ Meat & Fish
- .....
- ✗ Liquids
- ✗ Packaging
- ✗ Paper towels



### Reasons to recycle:

- In landfills, plastic can take up to 1,000 years to completely decompose
- There will be more plastic in the ocean than fish by 2050. Currently, around 3.5 trillion fish are living in the ocean
- Recycling aluminium drink cans saves up to 95% of the energy needed to make aluminium from its raw materials
- Just 1 out of every 400 coffee cups is recycled at present
- Annually food loss accounts for about 4.4 gigatons of greenhouse gas emissions
- 17 trees are rescued for every ton of cardboard that is recycled

Source: Bywaters 100+ Facts about recycling & sustainability (bywaters.co.uk)

The general waste we produce is double-checked by our contractors, who remove any recyclables they find.





**Victoria Sweeney**  
Sustainability & ESG Advisor

07443 187 258  
vsweeney@peellandp.co.uk

